



Touch panel

TY-TP65P30K

● Product Summary

A touch panel compatible with a 65-inch plasma display, this device achieves the high resolution of Approx. 2297 x 1289 while maintaining an extremely thin and compact design. With a built-in USB interface, the touch panel can be easily connected to peripheral devices of equipment such as personal computers.

● Product Specifications (Design and specifications are subject to change without notice.)

■ SPEC

Detection system	Infrared retroreflective detection
Panel aperture(W x H)	1468.1 mm x 839.1 mm (57.8" x 33.1")
Detection range(W x H)	1435 mm x 805 mm (56.5" x 31.7")
Effective detection range	Above detection range +1.0 mm top, bottom, right, left
Resolution	575 (W) x 323 (H) (Hardware processing) 2297 (W) x 1289 (H) (Smoothing software processing)
Detection pitch	2.5 mm x 2.5 mm
Electronic pen(option)	Infrared system

■ INTERFACE SPEC

Interface	USB 1.1 Compliance
Compliant signal	+DATA, -DATA, VCC, GND
I/F Connector	TYPE A (Cable connector)

■ STRUCTURE

Panel shape	Flat panel
Dimensions (W x H x D) (Protruding parts and mounting bracket not included)	1562.2 mm x 933.2 mm x 12 mm (61.5" x 36.8" x 0.5")
Carton Dimensions (W x H x D)	1716 mm x 1114 mm x 95 mm (67.6" x 43.9" x 3.8")
Weight (Mounting bracket not included)	approx. 3.0 kg (6.6 lbs.)
Gross weight	approx. 12.3 kg (27.1 lbs.)
Escutcheon material/color	Aluminum (Filter is Polycarbonate)/Black

■ ENVIRONMENT

Temperature (Temperature gradient under 25°C/Hr)*	Operation 0 to 40 °C
Humidity (No condensation)*	Operation 20 to 80 %

* Touch panel only. When the panel is attached to a plasma display, please follow the use condition of the plasma display.

■ ELECTRICAL

Power supply (voltage)	DC + 5 V ± 10 % (Supplied from USB bus power)
Electric current	DC + 5 V max 500 mA

■ SUPPORTED OS

Windows XP-32bit (Single touch), Windows XP-64bit (Single touch), Windows Vista-32bit (Single touch), Windows Vista-64bit (Single touch), Windows7-32bit (Dual touch), Windows7-64bit (Dual touch)

■ INCLUDED ACCESSORIES (T.B.D)

-Quick Start Guide -USB Cable (2m/2.2yd) -Mounting bracket and screws -Touch pen (2)
-CD-ROM(Operating instructions, Calibration Management Software for Windows XP/VISTA)

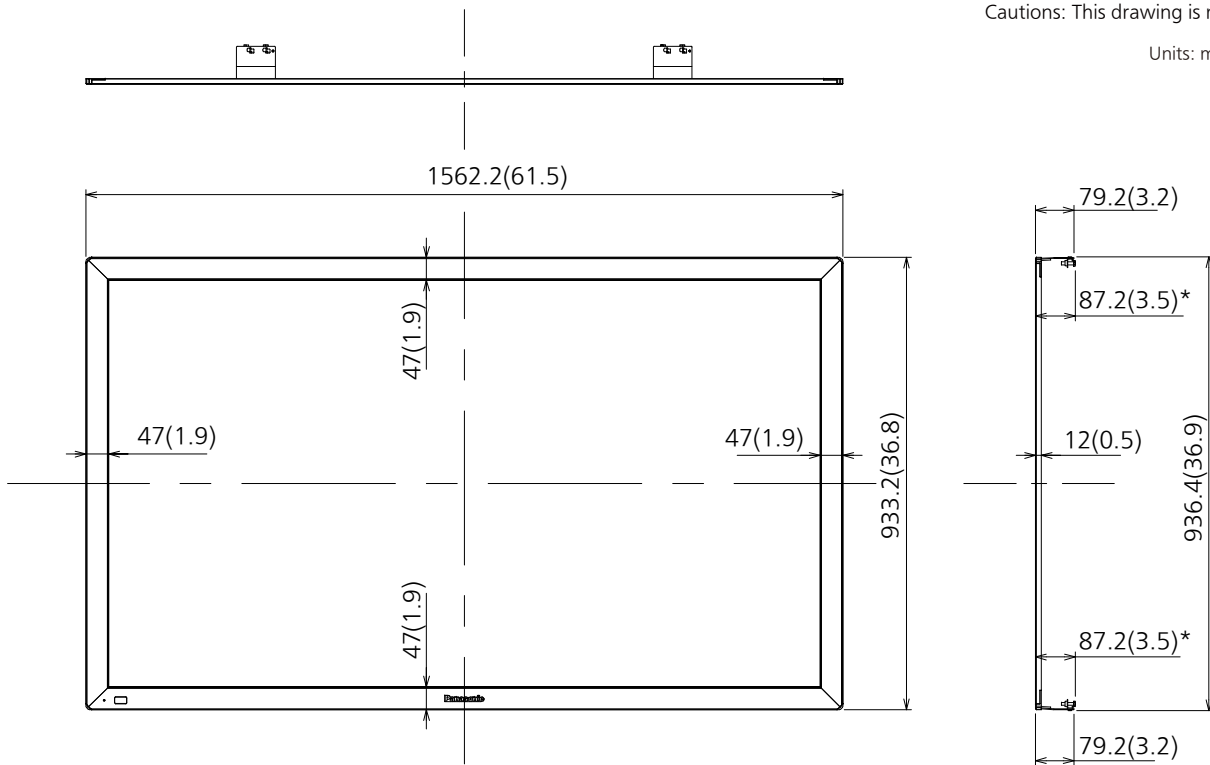
● OPTIONAL ACCESSORIES

Electronic pen	TY-TPEN30
----------------	-----------

● Dimensions

Cautions: This drawing is not a scale

Units: mm (inches)



*Dimensions may vary by the mounting set and the tightening state.

<With Display and Pedestal>

