

Panasonic

ideas for life



TY-FB9TE

U/V Tuner Board with Hospitality Port



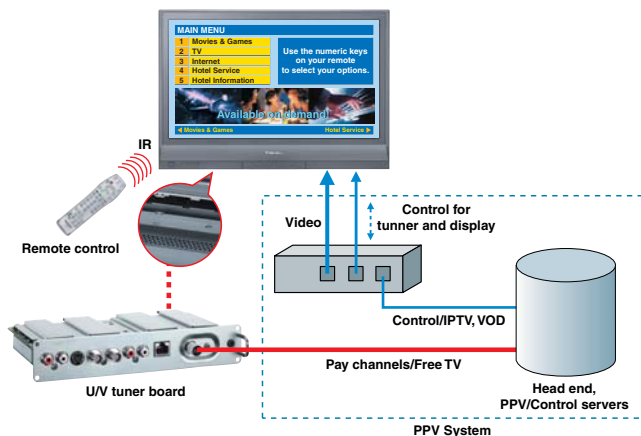
Terminals



Other Features

- Hotel mode/Normal mode switchable
- Volume Limit, Initial Input/Channel
- AV Input select by PPV system (for DVD, Digital Camera, & etc.)

System Example



Hospitality Port/PPV System

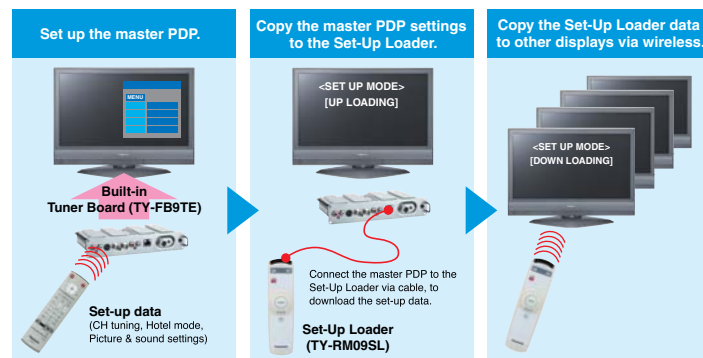
The TY-FB9TE Tuner Board mounts to the interchangeable slots of the Panasonic Hospitality Plasma Display models to provide an easy and sleek in-hotel TV solution. The slot-in type board remains concealed on the back of the display and requires no additional installation space. The Tuner Board is equipped with a hospitality port for the hotel PPV system, and also features AV In/Out terminals for connecting with in-room local AV equipments (such as VCR, DVD).

Specifications

Slot Compatibility		
TH-42PR10E, TH-37PR10E		Slots 2 & 3
Receiving System/Band Name		
PAL B, G, H; SECAM B, G SECAM L/L'	VHF E2-E12 VHF A - H (Italy) CATV (S01 - S05) CATV S11 - S20 (U1 - U10)	VHF H1 - H2 (Italy) UHF E21 - E69 CATV S1 - S10 (M1 - M10) CATV S21 - S41 (Hyperband)
PAL D, K; SECAM D, K	VHF R1 - R2 VHF R6 - R12	VHF R3 - R5 UHF E21 - E69
PAL 525/60		
M. NTSC		
NTSC		(AV input only)
System Capability		
Tuner function is controllable via RS232C terminal of plasma display.		

Set-Up Loader TY-RM09SL

You can easily clone settings with the optional Set-Up Loader TY-RM09SL. Simply download the programming settings from one display into the Set-Up Loader and use it to install them to as many displays as you wish. This keeps them all uniform and slashes installation time.



Hospitality Plasma Display Models



TH-42PR10E

42-inch High Definition Hospitality Plasma Display



TH-37PR10E

37-inch High Definition Hospitality Plasma Display